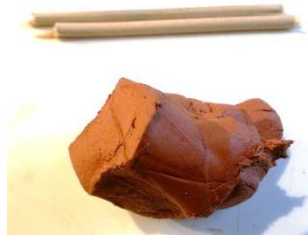


How to make an Ancient Greek sistrum

You will need:
Terracotta air drying clay
Thin wooden rods or
spent long matchsticks.



1. Mould your clay ball into a point at one end.



2. Work the clay so that there is a hoop at the other end to the point.



3. Push your thumb through and mould the hoop.
Keep the clay thick so keep it from splitting.



4. Lay the wooden rod on the hoop to see how long
it needs to be.



5. Break off two lengths of rod to the right length.



6. Mould clay into four small balls.



7. Flatten the balls ready to thread onto the rods.



8. Thread the clay discs onto the wooden rods.



9. Position and squeeze the rods into the hoop. The clay hoops should still be fairly moist, so mould the clay around the rod ends and remould the hoop if necessary.



10. Wiggle the clay discs a bit to make the holes a little larger than the rods, so they rattle when they dry.



How to make an Ancient Greek mosaic

You will need:

A flat object (like a block of wood or old coaster)

A jam jar or similar object

Strips of colour card or paper, cut into squares.

Design on paper and coloured in, ready to help you plan your mosaic.



1. Start by placing the coloured squares on your item. Don't forget to refer to the design you did on the paper previously. When you have placed your design in the right place, glue the squares in place. It doesn't matter if you have a lot of glue on your squares – at the end you will cover your mosaic in PVA glue anyway.



2. It is easier to stick the main parts of your design down first and then fill in the gaps. Don't forget, you can cut the squares to size or cut them into triangles. The squares will probably move around because the glue will be slippery. If that happens, just move them back into place with your brush.



3. If you are putting mosaic on a jam jar, or something similar, apply the squares in the same way as for the flat object. Paint PVA glue onto a part of the jar before you place on the squares.



4. All the spare glue will dry, so don't worry about it.

5. When you have made your mosaic (on a jar or flat square) brush a layer of PVA glue over your mosaic. When it is dry, your mosaic will be shiny, hard to the touch and full of colour (like it has been varnished).

